

GIBSON HEIGHTS

T O F I N O

A new single family subdivision nestled in the village of Tofino, BC offering fully serviced lots for sale

521 Gibson Street

UNIT	LOT SQ.FT.	BUILDING ENVELOPES SQ.FT.	LOT FRONTAGE FT.	LOT DEPTH FT.	PRICE
1	7404	4224	60'	143'	
2		SOLD			
3		SOLD			
4		SOLD			
5		SOLD			
6		SOLD			Please Enquire
7		SOLD			
8		SOLD			
9	5991	2200	65"	94'	
10	5796	2000	60'	94'	
11		SOLD			
12	5498	1960	58'	94'	
13	8794	4416	56'	164'	
14		SOLD			
15		SOLD			
16		SOLD			
17		SOLD			
18		SOLD			
19		SOLD			

*Lots 7-19 strata □ Lots 13-19 view lots ○ Building Setbacks: Front-24' Rear-30' Sides-5'

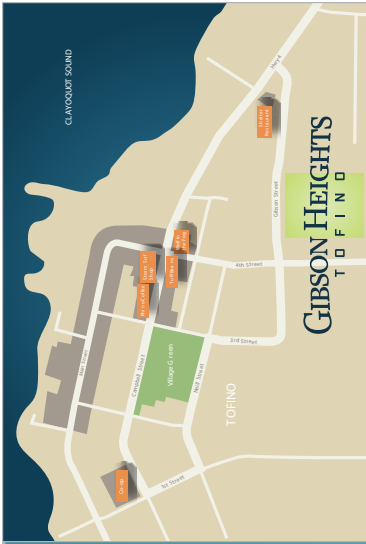
See other side for lot map →

For More Information Register Today @ gibsonheights.com

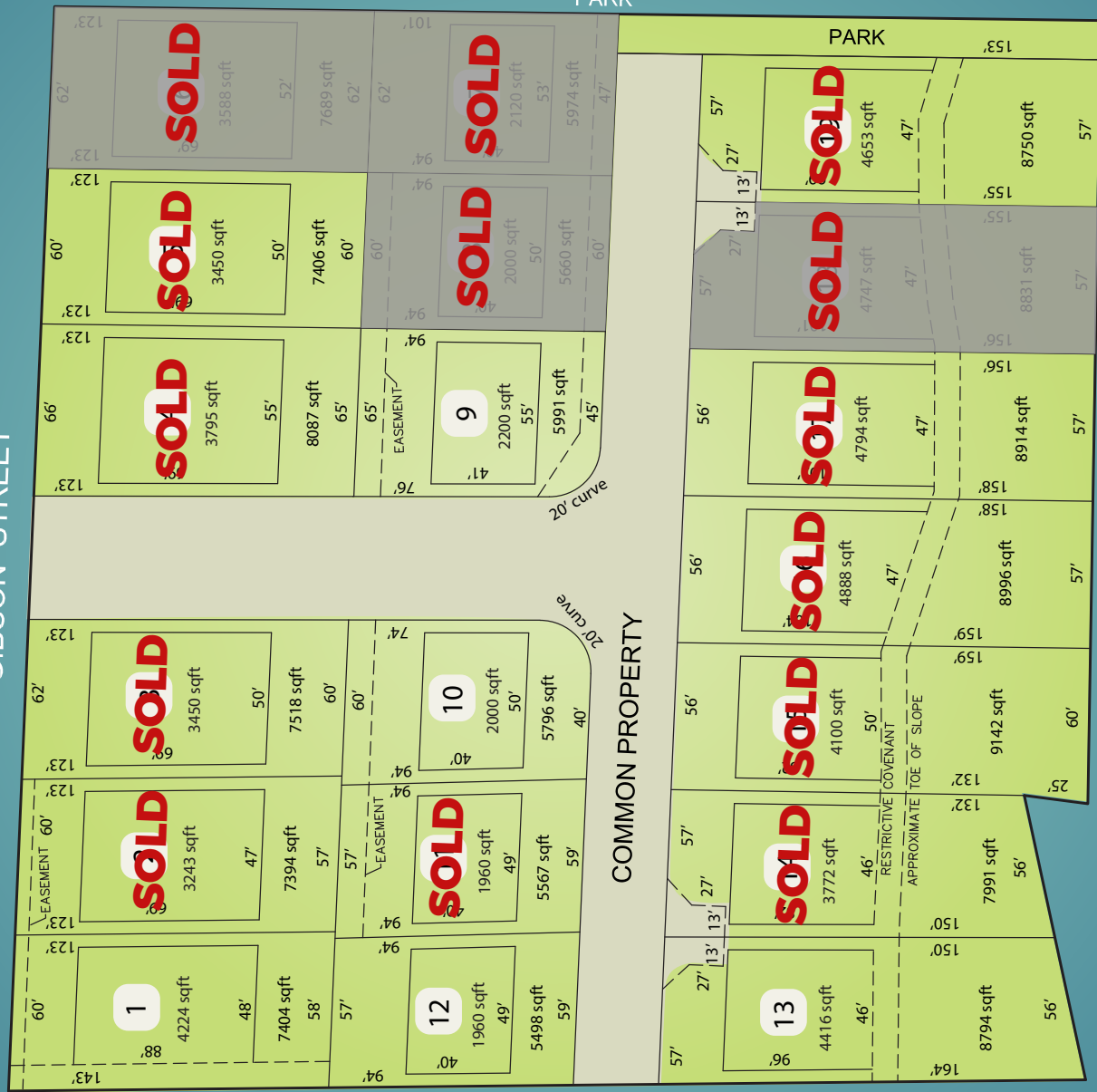
Call Joe Sopp: 250.217.3299
or email: joesopp@lefevregroup.com

This is not an offering for sale, this may only be carried out by issuance of a disclosure statement. Dimensions and specifications are subject to change without notice. Please see a sales representative for details. E.&.O.E.

LeFevre & Company



GIBSON STREET



PARK

COMMON PROPERTY

- * Lots 7-19 strata
- Lots 13-19 view lots
- Building Setbacks: Front-24' Rear-30' Sides-5'

This is not an offering for sale, this may only be carried out by issuance of a disclosure statement.

Dimensions and specifications are subject to change without notice. Please see sales representative for details. E.&O.E.

All measurements are approximate. Any information deemed important to the Buyer should be verified independently.



0 5 10 20 30 40
 The intended plot size of this plan is 560mm in width by 432mm in height (3 sizes) when plotted at a scale of 1:500.